

# STAINLESS STEEL KEG

The established keg



BLEFA Beverage Systems  
BLEFA GmbH  
Hüttenstraße 43  
57223 Kreuztal, Germany

Tel.: +49 2732 777-0  
Fax: +49 2732 777-292  
info@blefa.com  
www.blefa.com

**BLEFA.**  
DRAFT DESERVES QUALITY

**BLEFA - THE KEG.**  
MADE IN GERMANY

# STAINLESS STEEL KEG

The established keg

Stainless steel kegs from BLEFA offer a maximum of safety and reliability during all aspects of use in the market and brewery.

## VARIATIONS

DIN / EURO, Slim, US Kegs

## AREAS OF APPLICATIONS

Beer, Wine, Soft Drinks, Cider, Mixed Drinks

## FEATURES

- Various volumes from 10l to 59.62l
- 100% taste neutrality and UV protection
- Full stainless steel (1.4301)
- Individual branding according to your brand requirements
- Integrated burst disc (standard)

## BLEFA KEGS – MADE IN GERMANY

**Highest quality:** ISO certified 9001:2008

**Hygiene:** Utilization of high-quality stainless steel for all components that come in contact with contents (Standard 1.4301 / AISI 304; Special 1.4571 / AISI 316)

**Focus on safety:** All kegs are equipped with a safety burst disc



## INDIVIDUAL DECORATION



Embossing



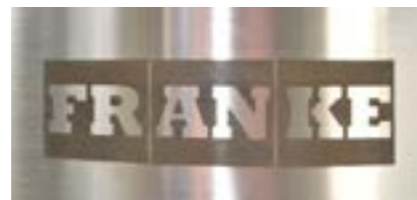
Silk screen



Colour band

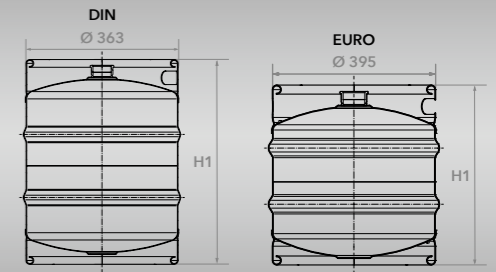


Laser inscription



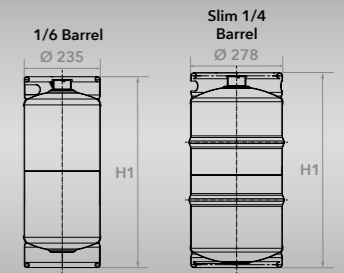
Electrochemical etching

## DIN / EURO Kegs



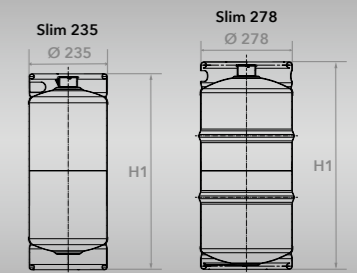
TYPE	CAPACITY (L/GAL)	Ø D (MM/IN)	H1 (MM/IN)	WEIGHT (KG/LB)	STACKABLE	EMBOSSING	SILK SCREEN	ETCHING	LASER 2-D BARCODE AND NO.
EURO	20 / 5.28	395 / 15.551	283 / 11.142	9.2 / 20.28	■	■	■	■	■
	25 / 6.61	395 / 15.551	325 / 12.795	9.5 / 20.94	■	■	■	■	■
	30 / 7.93	395 / 15.551	365 / 14.37	9.9 / 21.83	■	■	■	■	■
	50 / 13.21	395 / 15.551	532 / 20.945	11.8 / 26.01	■	■	■	■	■
DIN	15 / 3.96	363 / 14.291	255 / 10.039	7.9 / 17.42	■	■	■	■	■
	20 / 5.28	363 / 14.291	300 / 11.811	8.5 / 18.84	■	■	■	■	■
	25 / 6.61	363 / 14.291	355 / 13.976	8.9 / 19.62	■	■	■	■	■
	30 / 7.93	363 / 14.291	400 / 15.748	9.2 / 20.06	■	■	■	■	■
	50 / 13.21	363 / 14.291	600 / 23.622	11.4 / 25.13	■	■	■	■	■

## US Kegs



TYPE	CAPACITY (L/GAL)	Ø D (MM/IN)	H1 (MM/IN)	WEIGHT (KG/LB)	STACKABLE	EMBOSSING	SILK SCREEN	ETCHING	LASER 2-D BARCODE AND NO.
1/6 barrel	19.8 / 5.25	235 / 9.252	590.5 / 23.248	6 / 13.23	■	■	■	■	■
slim	29.72 / 7.87	278 / 10.945	590.5 / 23.248	7.9 / 17.42	■	■	■	■	■
1/4 barrel	29.72 / 7.87	395 / 15.551	343.5 / 13.524	10.4 / 22.93	■	■	■	■	■
1/2 barrel	59.62 / 15.75	395 / 15.551	590.5 / 23.248	14 / 30.86	■	■	■	■	■

## Slim Kegs



TYPE	CAPACITY (L/GAL)	Ø D (MM/IN)	H1 (MM/IN)	WEIGHT (KG/LB)	STACKABLE	EMBOSSING	SILK SCREEN	ETCHING	LASER 2-D BARCODE AND NO.
Slim Keg 235	10 / 2.64	235 / 9.252	318 / 12.52	3.9 / 8.6	■	■	■	■	■
	15 / 3.96	235 / 9.252	453 / 17.835	4.9 / 10.8	■	■	■	■	■
	20 / 5.28	235 / 9.252	570 / 22.441	5.7 / 12.57	■	■	■	■	■
Slim Keg 278	10 / 2.64	278 / 10.945	276 / 10.866	4.7 / 10.36	■	■	■	■	■
	15 / 3.96	278 / 10.945	365 / 14.37	5.5 / 12.13	■	■	■	■	■
	20 / 5.28	278 / 10.945	450 / 17.717	6.7 / 14.77	■	■	■	■	■
	25 / 6.61	278 / 10.945	532 / 20.945	6.5 / 14.33	■	■	■	■	■
	30 / 7.93	278 / 10.945	600 / 23.622	7.1 / 15.65	■	■	■	■	■

■ possible ■ conditionally possible ■ not possible